



Y200-1317 series

Directional VHF broadband dual dipole Yagi

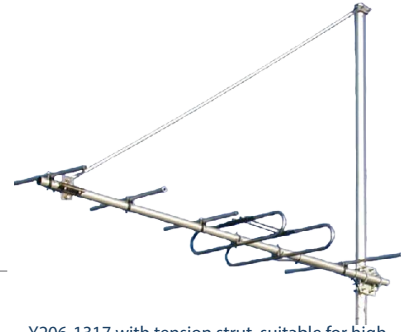
VHF high band 135-175 MHz



The Y206-1317 broadband dual dipole Yagi is designed and manufactured to cover the full VHF frequency range 135 to 175 MHz. They are the ideal solution for directional broadband VHF communications applications.

Mounting hardware, coaxial feeder cable, connectors and other installation accessories are all available separately.

SKU	Y204-1317	Y206-1317
Construction	Anodised aluminium boom and elements, 304 stainless steel dual dipole, external RG213 cable and nickel plated connector	
Frequency range	135-175 MHz - VHF, including high band VHF	
Bandwidth	Full frequency range - 40 MHz	
Tuning	Factory	
VSWR	<1.5:1	
Number of elements	4	6
Gain - nominal	6 dBd	7.5 dBd
Polarisation	Mount horizontal, vertical or slant $\pm 45^\circ$ as required	
Maximum power	250 Watts	
Impedance	50 Ohms	
H Plane @ 3 dBd	120°	82°
E Plane @ 3 dBd	64°	64°
Front-to-back ratio	17 dB	18 dB
Connector	N-type female jack connector fitted to 1.4 metres RG213 cable, rear exit from rear dipole assembly	
Boom length	1.9 metres	2.7 metres
Longest element	1.1 metres	1.2 metres
Weight	7.5kg	10.8kg
Projected area	0.135m ²	0.178m ²
Wind load at 160kph	16.313kg, 0.160kN	21.507kg, 0.211kN
Strut kit - order separate	YS1-23 - single tension	
Mounting hardware order separate	1 x Y2300 for aluminium models for larger mount capability see Y2300-L / Y2300-XL	
Installation tools required	8mm and 10mm spanners for elements, dipoles and link securing	



Y206-1317 with tension strut, suitable for high wind locations and reduces accidental movement or mechanical downtilt



Y206-1317 with tension strut and double compression strut, suitable for extreme wind locations or alpine regions with snow/ice



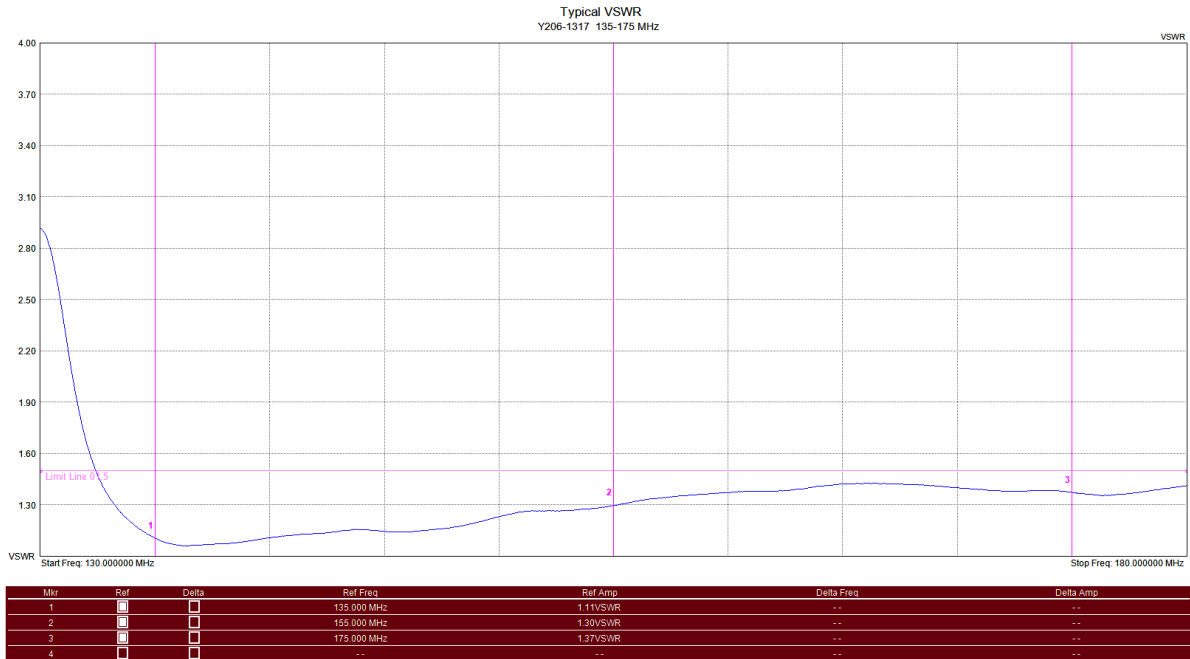
Dual dipole configuration with dipole links for true broadband performance



Y200-1317 series

Directional VHF broadband dual dipole Yagi

VHF high band 135-175 MHz



Typical VSWR - Y206-1317



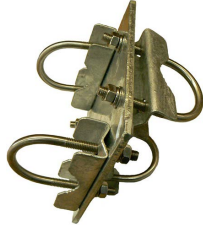
Y200-1317 series

Directional VHF broadband dual dipole Yagi

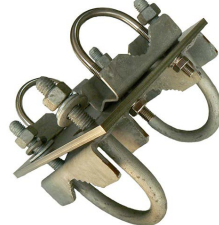
VHF high band 135-175 MHz



Suitable mounting hardware



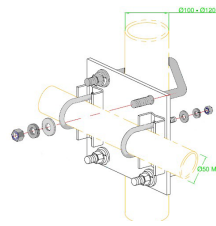
SKU: Y2300
Galvanised steel right-angle Yagi clamp
Boom: 30-50mm capability
Mount pole: 30-50mm capability
Also available in stainless steel
SKU: Y2300SS



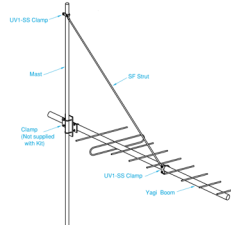
SKU: Y2300-L
Galvanised steel large right-angle Yagi clamp
Boom: 32-50mm capability
Mount pole: 40-75mm capability
Also available in stainless steel
SKU: Y2300SS-L



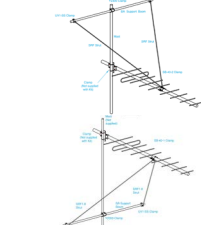
SKU: Y2300-XL
Galvanised steel extra large right-angle Yagi clamp
Boom: 32-50mm capability
Mount pole: 50-90mm capability
Also available in stainless steel
SKU: Y2300SS-XL



SKU: C-125
Galvanised steel extra large right-angle Yagi clamp
Boom: 32-50mm capability
Mount pole: 100-125mm capability



SKU: YS1-23
Single tension strut kit includes strut mounting hardware.



SKU: YS2-23
Dual tension strut kit includes strut mounting hardware and support boom.
SKU: YS2-23C
Dual compression strut kit includes strut mounting hardware and support boom.

Suitable feeder coaxial cable and connectors



SKU: 7890
RU400 low loss, solid copper core, foam dielectric cable
Ultra flexible SKU: 7890-2
Available in 100m, 300m or 500m (UF only) roll or alternatively request a custom cable assembly



SKU: NM-8226
N-type male solder pin crimp connector for RU400 / RU400-UF coaxial cable
Tri-metal plated - Low P.I.M.



SKU: 7890-3
RU600 low loss, solid copper core, foam dielectric cable
Available in 500m roll or alternatively request a custom cable assembly



SKU: NM-8226-2
N-type male solder pin crimp connector for RU600 low loss solid core coaxial cable
Clamp-type SKU: NM-8226-3
Tri-metal plated - Low P.I.M.



SKU: ZCG1250
1/2" corrugated shielding, foam dielectric coaxial cable
Air dielectric. SKU: ZCG1250-A
Helical super flex. SKU: ZCG1250SF
Available in per metre or 500m rolls or alternatively request a custom cable assembly



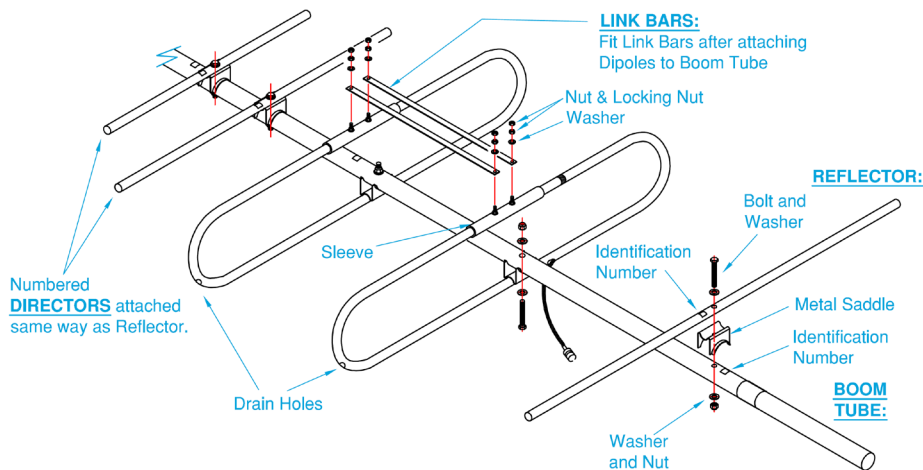
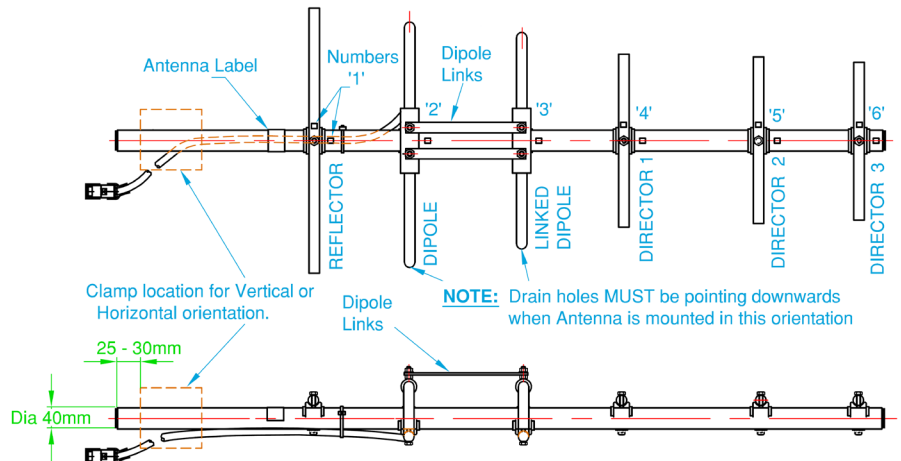
SKU: NM1250
N-type male clamp connector for 1/2" flexible, corrugated shielded, coaxial cable
Tri-metal plated - Low P.I.M.



Y200-1317 series

Directional VHF broadband dual dipole Yagi

VHF high band 135-175 MHz

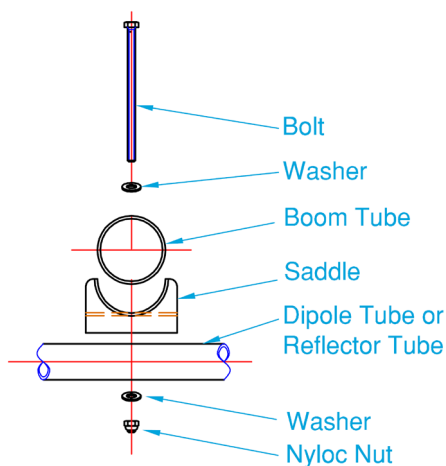


Installation Instructions:

1. Fit both Dipoles to the Boom Tube using Bolts & Washers through Dipole Tube, Saddle, Washer & 'Nyloc' Nut matching the assembly numbers shown in the diagram.
2. Note that Drain Holes in both Dipoles must be on the same side.
3. Fit Link Bars between both Dipoles. Install Link Bars onto Bolts, fit Washers & Nuts then secure with locking Nut.
4. Individually fit all other Element Tubes to Boom, matching corresponding Numbers on Element and Boom.
5. Strap Cable to Boom using Cable Ties (not provided) or similar.
6. Mounting can be **HORIZONTAL** or **VERTICAL** polarisation:

For **VERTICAL** polarisation, make sure the **Drain Holes** in both Dipoles are facing **downwards**.

For **HORIZONTAL** polarisation, mount the Yagi antenna with **Cable entry slot** downwards.



Typical Assembly